

WESTERN SYDNEY UNIVERSITY - WSU

TEMPORARY SALES OFFICE

SHEET NO.	DRAWING TITLE	REV
S1-01-DA000	COVER SHEET	C
S1-01-DA001	SITE PLAN	D
S1-01-DA002	DETAILED LAYOUT SALES OFFICE	D
S1-01-DA003	SALES OFFICE ELEVATIONS	D



LOCALITY PLAN



PROPOSED INDICATIVE ARTIST IMPRESSION. ALL LANDSCAPE FEATURES ARE INDICATIVE ONLY. REFER TO LANDSCAPE CONSULTANTS DOCUMENTATION PACKAGE FOR LANDSCAPE DESIGN AND PLANT SELECTION.

26.11.24	C	ISSUE FOR DEVELOPMENT APPLICATION
26.11.24	B	ISSUE FOR DEVELOPMENT APPLICATION
21.11.24	A	ISSUE FOR DEVELOPMENT APPLICATION
date	rev	amendment

MIRVAC DESIGN
L200 28 300 George St
Sydney NSW 2000
Tel: 02 9551 8000
Mirvac Design Pty Ltd
ABN 70 007 939 733
Mirvac Design Nominates / Responsible Architects
Alicia Verma Michael Miller David Hirst Farmington Strelanoff Andrew Li
https://www.mirvacdesign.com/nominates-and-builds



project:
TEMPORARY SALES OFFICE
2 Bullecourt Avenue, Milperra NSW 2214
Stage: 1 Site: 01 Lot:

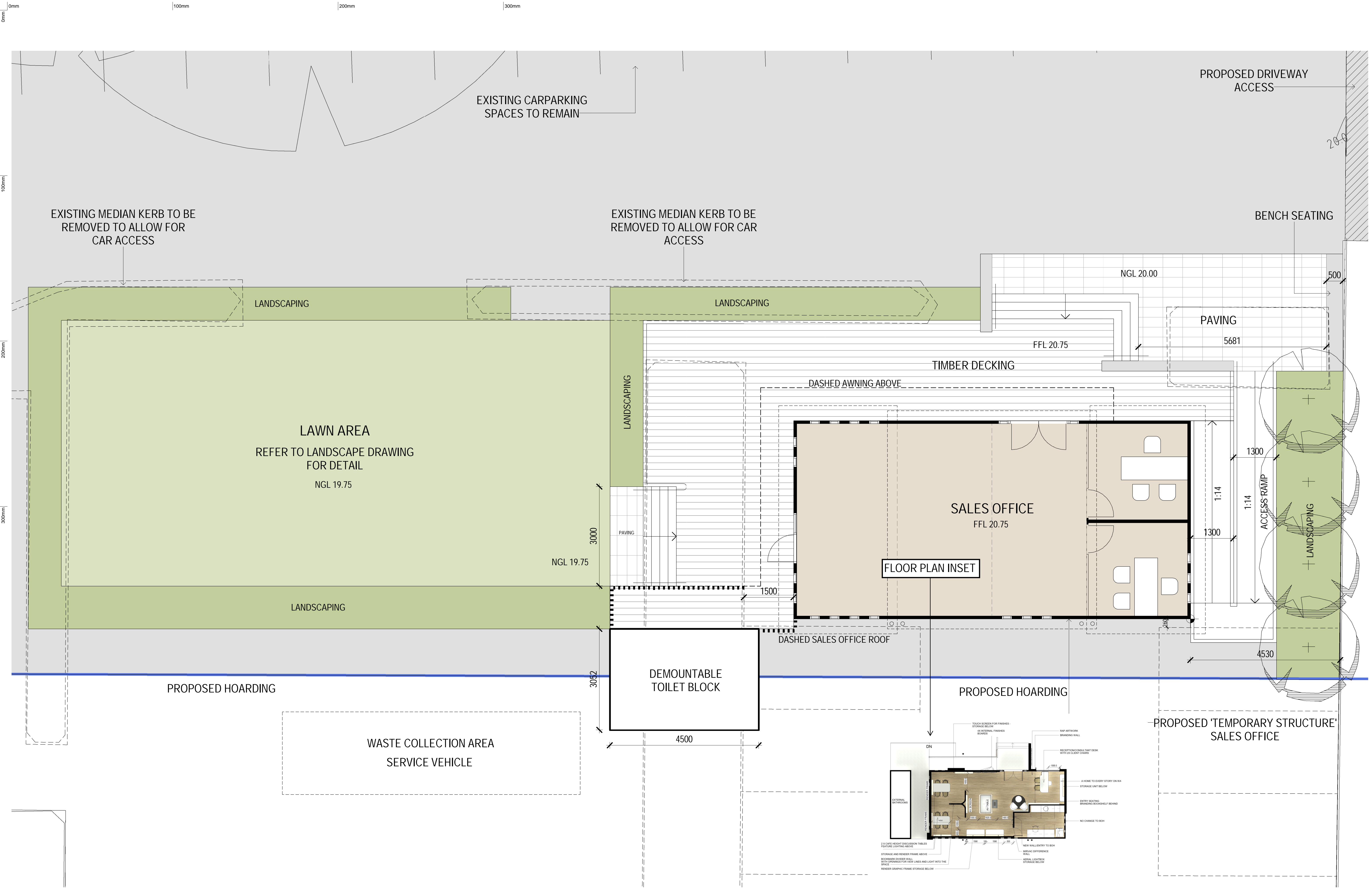
title:
COVER SHEET

job no: MB-10197
drawing no: S1-01-DA000
scale @ A1 : 1 : 3500
date: 26.11.24 rev: C

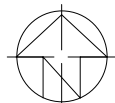


26.11.24	D	ISSUE FOR DEVELOPMENT APPLICATION
26.11.24	C	ISSUE FOR DEVELOPMENT APPLICATION
21.11.24	B	ISSUE FOR DEVELOPMENT APPLICATION
12.11.24	A	ISSUE FOR CONSULTANTS
08/	rev	amendment





26.11.24	D	ISSUE FOR DEVELOPMENT APPLICATION
26.11.24	C	ISSUE FOR DEVELOPMENT APPLICATION
21.11.24	B	ISSUE FOR DEVELOPMENT APPLICATION
14.11.24	A	ISSUE FOR CONSULTANTS
08/	rev	amendment

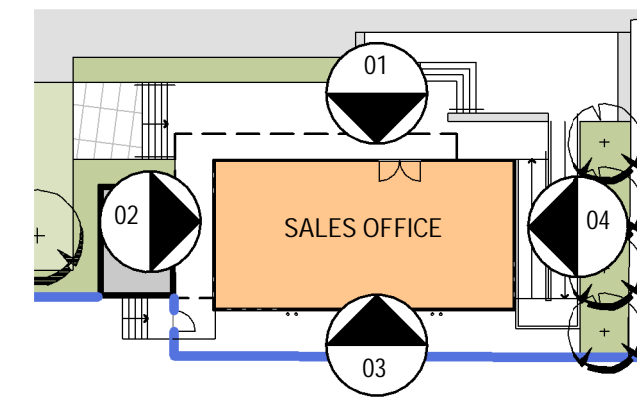


0mm

100mm

200mm

300mm

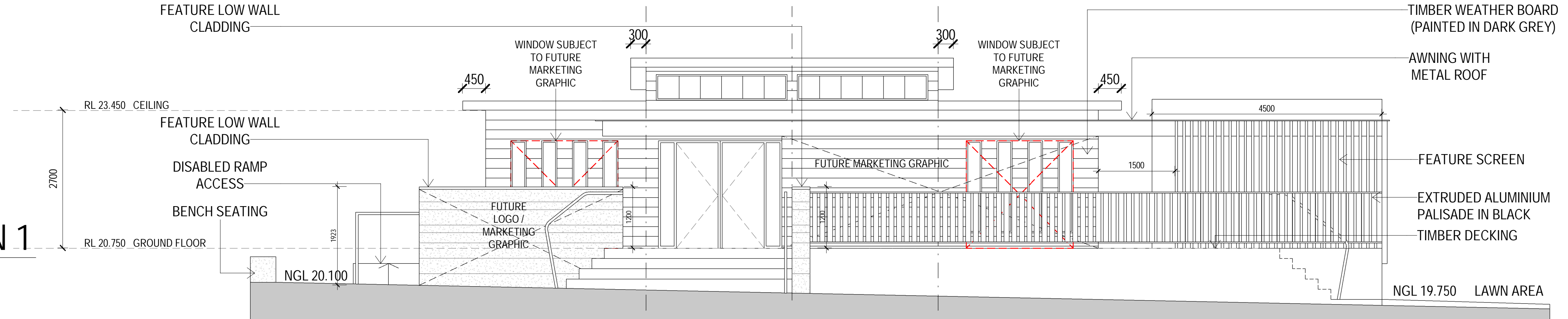


100mm

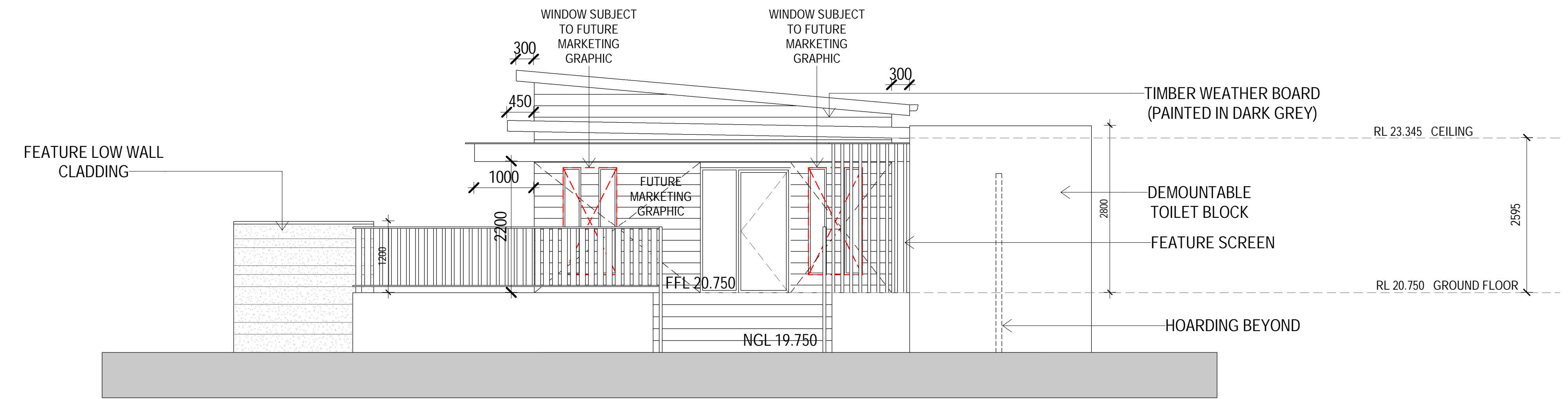
200mm

300mm

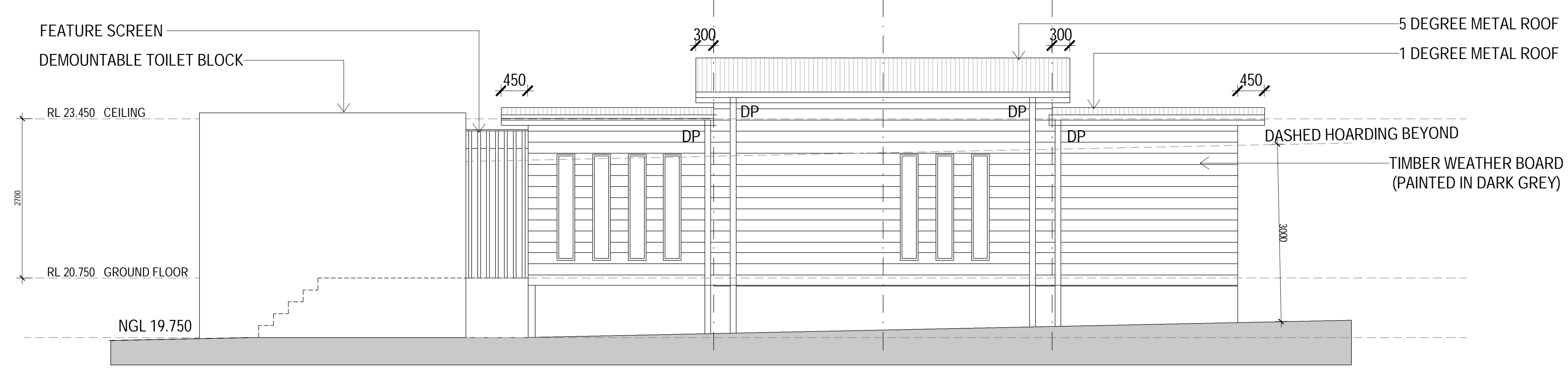
01 ELEVATION 1
SCALE 1:50 @ A1



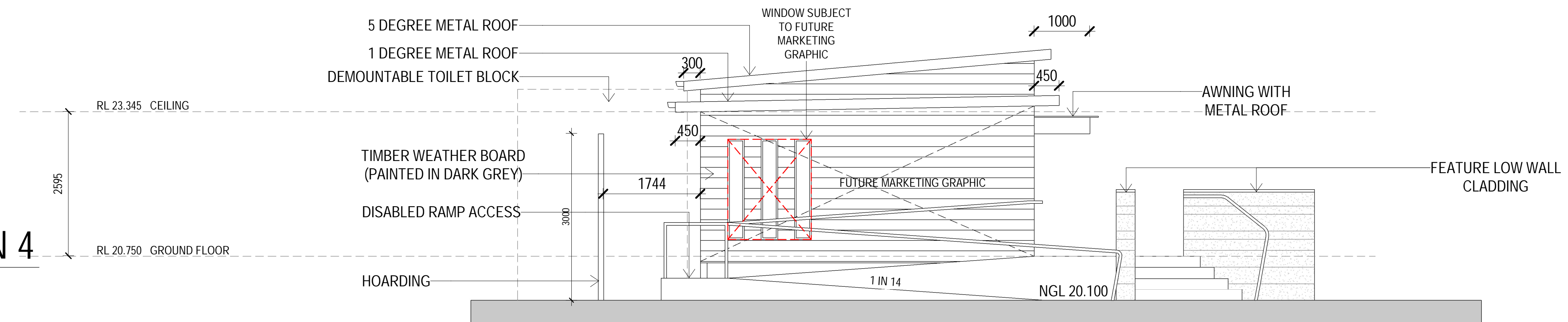
02 ELEVATION 2
SCALE 1:50 @ A1



03 ELEVATION 3
SCALE 1:50 @ A1



04 ELEVATION 4
SCALE 1:50 @ A1



26.11.24	D	ISSUE FOR DEVELOPMENT APPLICATION	
26.11.24	C	ISSUE FOR DEVELOPMENT APPLICATION	
21.11.24	B	ISSUE FOR DEVELOPMENT APPLICATION	
14.11.24	A	ISSUE FOR CONSULTANTS	
08/	rev	amendment	

MIRVAC DESIGN
Level 28 288 George St
Sydney NSW 2000
Tel: 02 9550 8888
mirvacdesign.com.au
Mirvac Design Nominatee / Responsible Architects
Asha Verma, Michael Wilson, David Hinch, Paramany Srikanth, Andrew Li
https://www.mirvacdesign.com/nominatee-architects



project:
TEMPORARY SALES OFFICE
2 Bullecourt Avenue, Milperra NSW 2214
Stage: 1 Site: 01 Lot:

title:
SALES OFFICE ELEVATIONS

job no: MB-10197
drawing no: S1-01-DA003
scale @ A1 : As indicated
date: 26.11.24 rev: D